

Offices for Rent

Offices conveniently located near Heathrow Airport available for rent, with excellent access to major motorway networks & on-site warehousing facilities available.

Skylink House, Stanwell Moor Road, Surrey, TW19 6AB

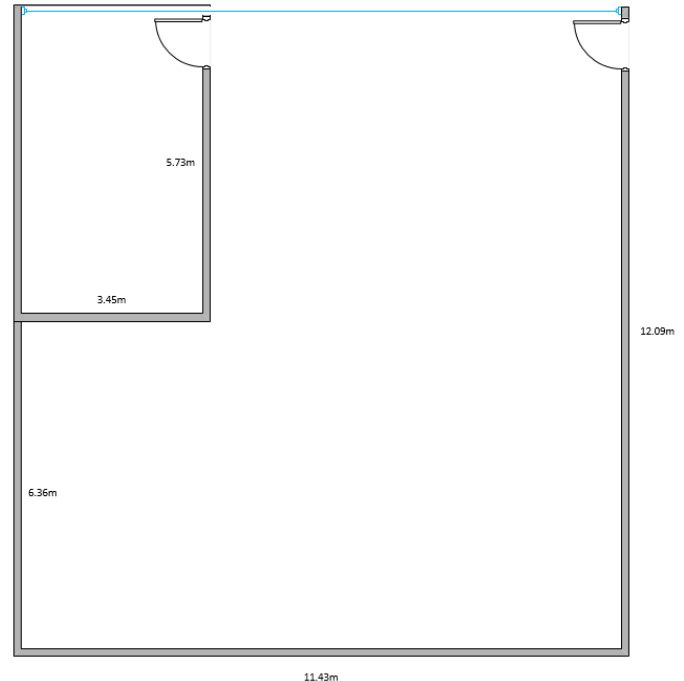
Second floor office situated at UCH's ETSF facility. Air conditioned with ample on-site parking.

The office is currently an empty shell, willing to decorate to customer specifications.

Multiple power and network points and Paxton access control to the main building. The office is fully networked.

Kitchen and toilet facilities are located on the same floor.

Preferential rates are negotiable based on additional business*.



Key Features:

- Dims 11.43m x 12.09m – approx. 1487 sq ft
- Office shell unit - Willing to decorate to specification.*
- Air Conditioned
- Ample on-site parking
- Available for occupation now
- Preferential rates negotiable*
- Letting term is flexible
- Within 0.5 mile radius of Heathrow Airport
- Excellent access to major motorway networks
- Warehouse facilities available to handle cargo, rework & dispatch cargo.

For more information, please contact Vishal on 07779224694 or email vishal@uchlogistics.co.uk.



UCH Logistics Limited

Colnbrook Cargo Centre | Old Bath Road | Colnbrook | Colnbrook | SL3 0NW | Tel: 01784 242 824 | Fax: 01784 245 222

Registered in England and Wales No: 4130090 | Member of the Road Haulage Association No: 18327

Standard Trading conditions copies available on request. All goods carried subject to RHA Conditions of Carriage 2009